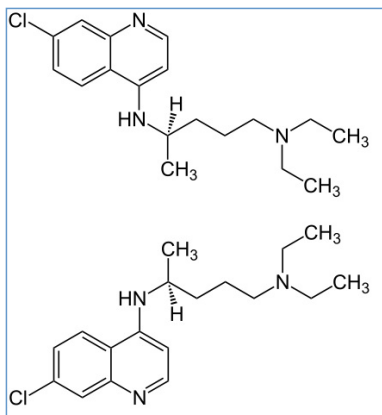


Stabilis



Chloroquine phosphate



Stabilité des préparations

		2250 mg ® = ?	SyrSpend SF® PH4 >> 150 mL 2-8°C		90			3819
		2250 mg ® = ?	SyrSpend SF® PH4 >> 150 mL 20-25°C		90			3819
		1800 mg ®=? (Sanofi Winthrop)	OraPlus® / OraSweet® (1:1) >> 120 mL 2-8°C		60			2422
		1800 mg ®=? (Sanofi Winthrop)	OraPlus® / OraSweet SF® (1:1) >> 120 mL 2-8°C		60			2422
		1800 mg ®=? (Sanofi Winthrop)	Sirop de cerise >> 120 ml 25°C		60			2422
		1800 mg ®=? (Sanofi Winthrop)	OraPlus® / OraSweet® (1:1) >> 120 mL 2-8°C		60			2422
		1800 mg ®=? (Sanofi Winthrop)	OraPlus® / OraSweet SF® (1:1) >> 120 mL 2-8°C		60			2422
		1800 mg ®=? (Sanofi Winthrop)	Sirop de cerise >> 120 ml 5°C		60			2422





Bibliographie

	Type	Source
2422	Revue	Allen LV, Jr, Erickson MA, Stability of alprazolam, chloroquine phosphate, cisapride, enalapril maleate, and hydralazine hydrochloride in extemporaneously compounded oral liquids Am J Health-Syst Pharm 1998 ; 55: 1915-1920.
3819	Revue	Ferreiraa A.O, Poloninia H.C, Silva S.L, Patricio F.B, Brand?oa M.A.F, Raposoa N.R.B. Feasibility of amlodipine besylate, chloroquine phosphate, dapsona, phenytoin, pyridoxine hydrochloride, sulfadiazine, sulfasalazine, tetracycline hydrochloride, trimethoprim and zonisamide in SyrSpend® SF PH4 oral suspensions. J Pharm Biomed Anal 2015 ; 118: 105-112.



Dictionnaire

 Antiparasitaire	 Solution buvable
 Stabilité des préparations	 Contenant
 Origine	 Excipient
 Température	 Conservation
 Durée de stabilité	 Biosimilaire
 Données conflictuelles	 Bibliographie
 Flacon plastique	 Comprimés
 A l'abri de la lumière	 Jour
 Bibliographie	 Dictionnaire